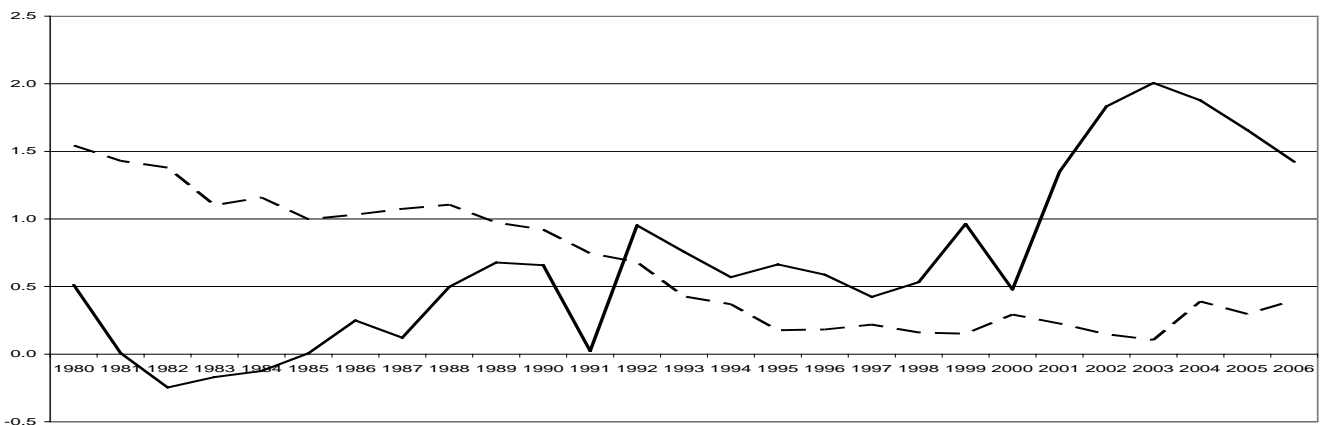


**Table 1: Population change in 2006 (nowcasts)**

COUNTRY	Population 1.1.2006	Live births	Deaths	Natural change	Net migration	Total change	Population 1.1.2007	Crude birth rate	Crude death rate	Crude natural change rate	Crude net migration rate	Crude total change rate
	(1000)							x1000				
<b>EU-27</b>	<b>492 852.4</b>	<b>5 190.9</b>	<b>4 791.0</b>	<b>399.8</b>	<b>1 422.6</b>	<b>1 822.4</b>	<b>494 674.8</b>	<b>10.5</b>	<b>9.7</b>	<b>0.8</b>	<b>2.9</b>	<b>3.7</b>
<b>EU-25</b>	<b>463 523.4</b>	<b>4 897.5</b>	<b>4 418.0</b>	<b>479.4</b>	<b>1 434.9</b>	<b>1 914.3</b>	<b>465 437.7</b>	<b>10.5</b>	<b>9.5</b>	<b>1.0</b>	<b>3.1</b>	<b>4.1</b>
<b>EA-13</b>	<b>316 567.9</b>	<b>3 281.4</b>	<b>2 914.1</b>	<b>367.3</b>	<b>1 200.1</b>	<b>1 567.4</b>	<b>318 135.3</b>	<b>10.3</b>	<b>9.2</b>	<b>1.2</b>	<b>3.8</b>	<b>4.9</b>
<b>EA-12</b>	<b>314 564.5</b>	<b>3 263.2</b>	<b>2 895.6</b>	<b>367.6</b>	<b>1 192.9</b>	<b>1 560.5</b>	<b>316 125.0</b>	<b>10.3</b>	<b>9.2</b>	<b>1.2</b>	<b>3.8</b>	<b>4.9</b>
<b>Candidate countries</b>	<b>79 001.3</b>	<b>1 421.7</b>	<b>519.9</b>	<b>901.7</b>	<b>9.0</b>	<b>910.7</b>	<b>79 912.1</b>	<b>17.9</b>	<b>6.5</b>	<b>11.3</b>	<b>0.1</b>	<b>11.5</b>
<b>EEA28</b>	<b>468 498.4</b>	<b>4 958.5</b>	<b>4 461.8</b>	<b>496.7</b>	<b>1 461.4</b>	<b>1 958.2</b>	<b>470 456.6</b>	<b>10.6</b>	<b>9.5</b>	<b>1.1</b>	<b>3.1</b>	<b>4.2</b>
<b>EFTA</b>	<b>12 434.1</b>	<b>133.5</b>	<b>104.1</b>	<b>29.4</b>	<b>78.7</b>	<b>108.1</b>	<b>12 542.2</b>	<b>10.7</b>	<b>8.3</b>	<b>2.4</b>	<b>6.3</b>	<b>8.7</b>
<i>EU Member States</i>												
Belgium	10 511.4	120.8	102.4	18.4	40.7	59.1	10 570.5	11.5	9.7	1.7	3.9	5.6
Bulgaria	7 718.8	72.4	113.2	-40.8	-11.5	-52.3	7 666.5	9.4	14.7	-5.3	-1.5	-6.8
Czech Republic	10 251.1	104.8	104.8	0.0	37.8	37.8	10 288.9	10.2	10.2	0.0	3.7	3.7
Denmark	5 427.5	65.0	56.1	8.9	9.3	18.2	5 445.7	12.0	10.3	1.6	1.7	3.4
Germany	82 438.0	672.5	839.3	-166.8	40.5	-126.3	82 311.7	8.2	10.2	-2.0	0.5	-1.5
Estonia	1 344.7	14.7	17.6	-2.9	-1.9	-4.8	1 339.9	11.0	13.1	-2.1	-1.4	-3.6
Ireland	4 209.0	64.4	26.7	37.7	80.0	117.7	4 326.7	15.1	6.3	8.8	18.7	27.6
Greece	11 125.2	108.2	105.3	2.9	41.0	43.9	11 169.1	9.7	9.4	0.3	3.7	3.9
Spain	43 758.3	471.1	381.0	90.0	636.0	726.1	44 484.3	10.7	8.6	2.0	14.4	16.5
France	62 886.2	820.0	530.3	289.7	160.5	450.1	63 336.3	13.0	8.4	4.6	2.5	7.1
<i>of which, Metropolitan France</i>	<i>61 044.7</i>	<i>786.7</i>	<i>520.0</i>	<i>266.7</i>	<i>157.2</i>	<i>423.9</i>	<i>61 468.6</i>	<i>12.8</i>	<i>8.5</i>	<i>4.4</i>	<i>2.6</i>	<i>6.9</i>
Italy	58 751.7	570.5	545.4	25.1	157.0	182.1	58 933.8	9.7	9.3	0.4	2.7	3.1
Cyprus	766.4	8.6	5.3	3.4	6.2	9.6	776.0	11.2	6.8	4.4	8.1	12.4
Latvia	2 294.6	21.7	33.4	-11.7	-2.5	-14.1	2 280.5	9.5	14.6	-5.1	-1.1	-6.2
Lithuania	3 403.3	30.9	45.0	-14.1	-3.5	-17.6	3 385.7	9.1	13.3	-4.2	-1.0	-5.2
Luxembourg	459.5	5.6	3.5	2.0	2.8	4.9	464.4	12.1	7.7	4.4	6.1	10.5
Hungary	10 076.6	99.4	132.3	-33.0	14.2	-18.7	10 057.9	9.9	13.1	-3.3	1.4	-1.9
Malta	404.3	3.8	3.1	0.7	2.6	3.3	407.7	9.4	7.5	1.8	6.3	8.2
Netherlands	16 334.2	184.7	137.4	47.3	-35.3	12.0	16 346.2	11.3	8.4	2.9	-2.2	0.7
Austria	8 265.9	76.5	74.5	2.0	28.0	29.9	8 295.9	9.2	9.0	0.2	3.4	3.6
Poland	38 157.1	368.3	376.0	-7.6	-47.6	-55.2	38 101.8	9.7	9.9	-0.2	-1.2	-1.4
Portugal	10 569.6	110.4	102.2	8.2	31.2	39.4	10 609.0	10.4	9.7	0.8	2.9	3.7
Romania	21 610.2	221.0	259.9	-38.8	-0.7	-39.6	21 570.6	10.2	12.0	-1.8	0.0	-1.8
Slovenia	2 003.4	18.2	18.5	-0.3	7.2	6.9	2 010.3	9.1	9.2	-0.1	3.6	3.4
Slovakia	5 389.2	52.6	52.8	-0.2	2.6	2.5	5 391.6	9.8	9.8	0.0	0.5	0.5
Finland	5 255.6	58.6	47.7	10.9	10.6	21.5	5 277.1	11.1	9.1	2.1	2.0	4.1
Sweden	9 047.8	105.6	91.5	14.1	58.0	72.1	9 119.8	11.6	10.1	1.5	6.4	7.9
United Kingdom	60 393.1	740.5	586.0	154.5	159.5	314.0	60 707.1	12.2	9.7	2.6	2.6	5.2
<i>EU candidate countries</i>												
Croatia	4 442.8	40.0	51.5	-11.5	8.5	-3.0	4 439.8	9.0	11.6	-2.6	1.9	-0.7
FYR Macedonia	2 038.5	21.7	18.4	3.3	0.5	3.7	2 042.2	10.6	9.0	1.6	0.2	1.8
Turkey	72 520.0	1 360.0	450.0	910.0	0.0	910.0	73 430.0	18.6	6.2	12.5	0.0	12.5
<i>EFTA countries</i>												
Iceland	299.9	4.2	1.8	2.4	1.4	3.8	303.7	13.9	6.1	7.8	4.7	12.5
Liechtenstein	34.9	0.4	0.2	0.1	0.2	0.3	35.2	10.0	6.6	3.5	5.4	8.9
Norway	4 640.2	56.5	41.7	14.9	24.9	39.8	4 680.0	12.1	8.9	3.2	5.4	8.5
Switzerland	7 459.1	72.4	60.4	12.0	52.2	64.2	7 523.4	9.7	8.1	1.6	7.0	8.6

**Figure 2: Observed (1980-2005) and forecast (2006) natural change (dashed line) and corrected net migration (continuous line) in the European Union (in million)**



Note: from 1998 onwards the figures include the French overseas departments. The net migration is calculated as the difference between total and natural change (see methodological notes).